

Vertical Wall Mount Utility Bracket

INSTALLATION INSTRUCTIONS

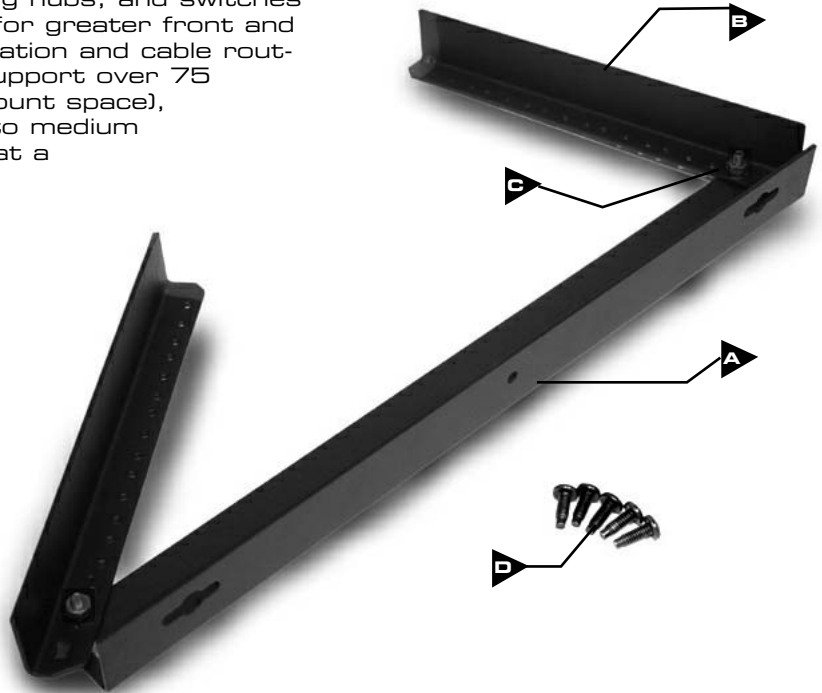
INSTARAQ

This utility rack accommodates all standard 19" rack mounted patch panels, rack enclosures, networking hubs, and switches regardless of their depth, while allowing for greater front and rear access, simplifying the overall installation and cable routing. Its durable steel frame design can support over 75 pounds of equipment, in 5 RMS (rack mount space), making it an excellent solution for small to medium size installs where floor or wall space is at a premium.

ITEM #: ICCMSWMUR5

PACKAGE INCLUDES:

- A** Mounting Fixture , 1 piece
- B** Arms, 2 piece
- C** Mounting Hardware
Flange Nut, 2 piece
Hex Bolt, 2 piece
- D** Mounting Screws, 12 - 24, 12 piece



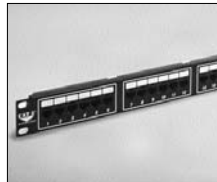
Available Accessories

ICC provides a full range of Category 5e and Category 6 cross connect products for all your connecting and patching needs. Please visit our website at www.icc.com for complete information.



High-Density Booted Patch Cords

ICC provides a wide range of CAT 5e and CAT 6 patch cords that surpasses component level industry requirements. The uniquely designed ultra-slim line boots allows patch cords to fit adjacent to each other in high-density applications where more ports are required in tighter spaces. Available in red, blue, white, gray, yellow, black, green, and now orange, they help simplify installation by allowing easy identification of circuits.



24-Port CAT 5e Patch Panel

Exceeds TIA/EIA CAT 5e standards. Includes mounting screws.

ITEM NUMBER	DESCRIPTION
-------------	-------------

ICMPP0245E	24-Port, 1 RMS
------------	----------------

NOTE: Other Port Configurations available

ITEM NUMBER	DESCRIPTION
-------------	-------------

ICPCS9YYXX*	CAT5e HD Patch Cords
ICPCS6YYXX*	CAT6 HD Patch Cords
YY=Lengths: 1', 3', 5', 7', 10', 14', 20' & 25' (custom lengths available upon request)	
XX=Colors: BK, BL, GN, GY, OR, RD, YL, & WH	



48-Port CAT 6+ component-Rated Patch Panel

CAT6 patch panel surpasses industry requirements for component rated Category 6 performance. It comes integrated with universal label allowing for either 568-A/B wiring. Package includes mounting screws.

ITEM NUMBER	DESCRIPTION
-------------	-------------

ICMPP0486C	48-Port, 2 RMS
ICMPP0246C	24-Port, 1 RMS
ICMPP012V6C	12-Port, Vertical

Color Code: (BK) Black, (BL)Blue, (GN) Green, (GY) Gray, (OR) Orange, (RD) Red, (YL) Yellow, (WH) White

Premium**Products** | Proven**Performance** | Competitive**Prices**



CUSTOMER CARE / TECHNICAL SUPPORT • CSR@ICC.COM / 888-275-4422 (ASK-4-ICC)

ASSEMBLY INSTRUCTIONS

Step 1.



Loosen the hex bolts and flange nuts until the mounting fixture arms are able to be unfolded; do not loosen the bolts and nuts all the way.

Step 2.



Unfold the arms until the indexing tabs are engaged in their slots as shown.

Step 3.



Tighten hex bolts and flange nuts as the arms are perpendicular with the mounting fixture body.

Step 4.



Mount bracket vertically to wall studs or backboard with hardware of your choice.

Step 5.

For alignment purposes, install your equipment to the Utility Bracket from the end of the mounting fixture arms using the #12-24 x 5/8 mounting screws provided as shown.

