



Cross-Connect Solutions

CAT 5e 66 WIRING BLOCK

INSTALLATION INSTRUCTIONS

CAT 5e 66 Wiring Block

ICC's 50-pair 66 blocks are designed to be field-terminated and can be wall mounted using an optional 89B bracket. Available accessory items include a clear plastic protective dust cover and wire connection labels.

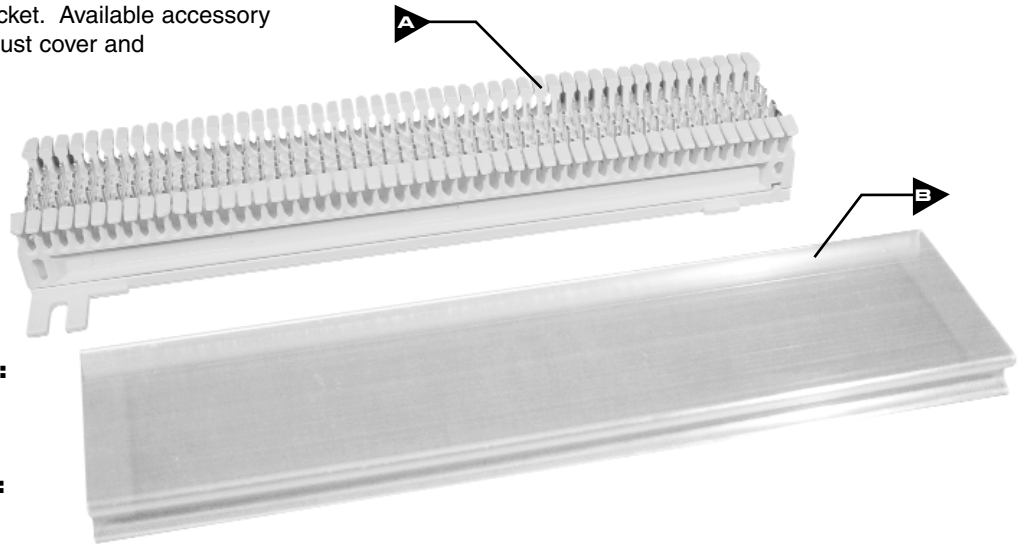
The new 66 blocks meet industry performance standards for Category 5e data and voice use. The blocks are made from durable, flame retardant plastic and feature minimum spacing between clips to minimize near end cross talk.

IC066NB050 INCLUDES:

A 66 Wiring Block , 1 piece

IC066CV050 INCLUDES:

B 66 Block Cover, 1 piece



AVAILABLE ACCESSORIES

To support the use of 66 Wiring Blocks, ICC has developed additional accessories including bridging clips, labeling strips, mounting bracket, and termination tools to help simplify the overall installation.



66 Wiring Block Bridging Clips

For use with 50-pair 66 block.

ITEM NUMBER	DESCRIPTION
-------------	-------------

IC066BC025	Bridging Clips, 25 pieces/bag
------------	----------------------------------



89B Mounting Bracket

For use with 50-pair 66 block.

ITEM NUMBER	DESCRIPTION
-------------	-------------

ICMB89B0WH	Mounting Bracket
------------	------------------



66 Wiring Block Labeling Strips

For use with 50-pair 66 block.

ITEM NUMBER	DESCRIPTION
-------------	-------------

IC066LS050	Labeling Strips, 10 pieces/bag
------------	-----------------------------------



110 and 66 Single Blade Punch-Down Tool

This tool is designed for both 110 and 66 single-wire termination. It comes with both 110 and 66 blades stored in the handle.

ITEM NUMBER	DESCRIPTION
-------------	-------------

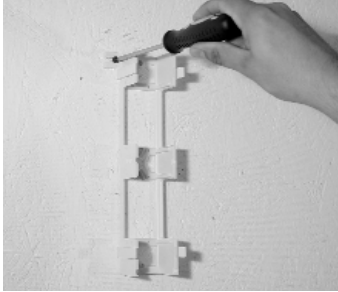
ICACSPDT00	110 Punch Down Tool
ICACS066RB	66 Replacement Blade
ICACS110RB	110 Replacement Blade

CUSTOMER CARE / TECHNICAL SUPPORT • CSR@ICC.COM / 888-275-4422 (ASK-4-ICC)

• Phone 562-356-3111 • Fax 562-356-3100 • Website WWW.ICC.COM

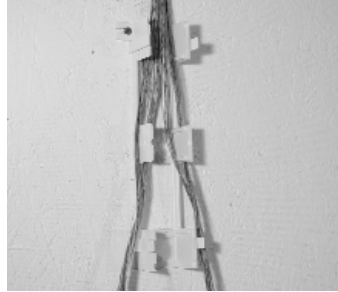
ASSEMBLY INSTRUCTIONS

Step 1.



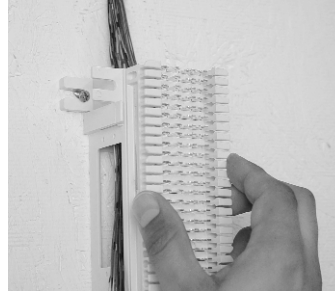
1. Mount an 89B mounting bracket (sold separately) on a plywood wall by using two wood screws.

Step 2.



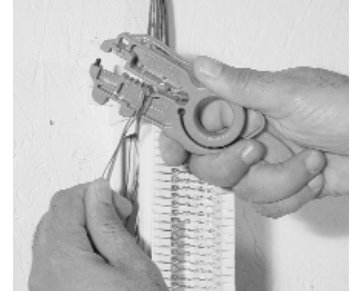
2. Route the horizontal or backbone cables inside the 89B mounting bracket and feed the cables out either side of the bracket.

Step 3.



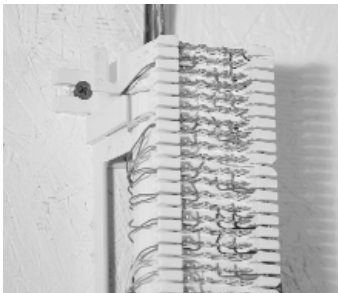
3. Snap the 66 wiring block onto the 89B mounting bracket.

Step 4.



4. Use the UTP cable stripper tool to strip back cable jacket as close to the termination point as possible.

Step 5.



5. Route each pair through the same slot in the strip. Separate the conductors of each pair and place them in the appropriate metal clips.

Note: For CAT 5e installations, TIA recommends .05" twist on wire pairs.

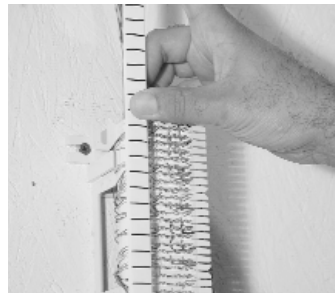
Step 6.



6. Terminate each conductor by using the 66 single blade punch-down tool.

Note: Cross-connect wires should be terminated through the same slot in the strip as the horizontal or backbone cable pairs.

Step 7.



7. Install the labeling strips (not included) and label each station as necessary.

Step 8.



8. Use the bridging clips to connect the middle metal clips if necessary.