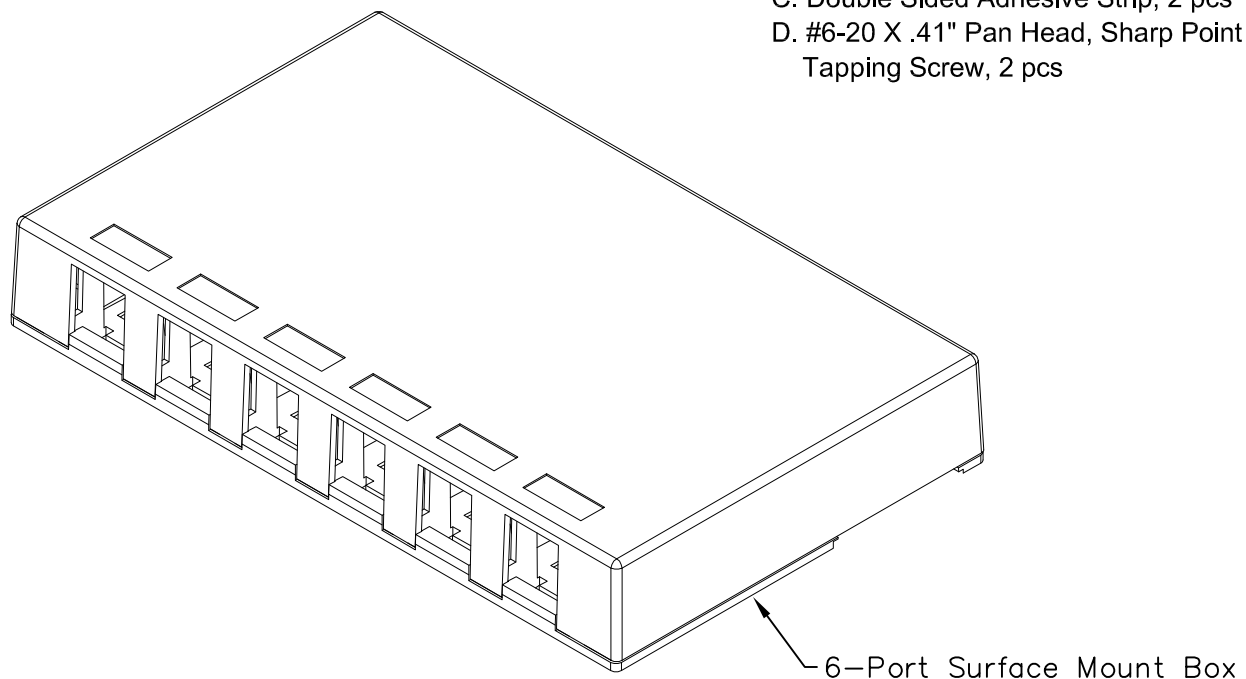


6-Port Surface Mount Box

PRODUCT SPECIFICATION

Package includes:

- A. Surface Mount Box Cover, 1 pc
- B. Surface Mount Box Base, 1 pc
- C. Double Sided Adhesive Strip, 2 pcs
- D. #6-20 X .41" Pan Head, Sharp Point Tapping Screw, 2 pcs



Features and Benefits:

- Provides a clean modular surface mount outlet solution for voice, data, and other communication needs to the work area for commercial or residential applications.
- Multiple mounting options including adhesive backing and screws.
- Recessed areas for ID labels.
- Rugged and durable construction.
- Accommodates a wide variety of easy to snap-in modules, providing configuration flexibility.
- Compatible with ICRWR12XXX raceway sections.
- Accepts all IC107 modules.
- Available in black, ivory and white.
- ANSI/TIA-568-C and UL 1863 compliant

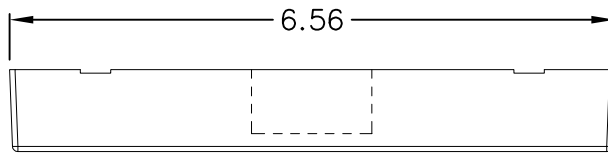
SURFACE MOUNT BOX, 6-PORT

| | |
|----------|------------|
| ITEM NO. | IC107SB6XX |
| DWG NO. | PS107SB600 |

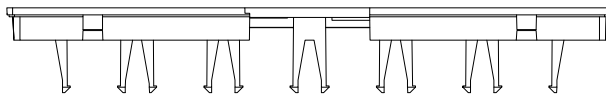
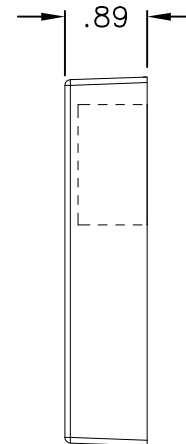
| | |
|----------|---|
| REV. | B |
| PAGE NO. | 1 |



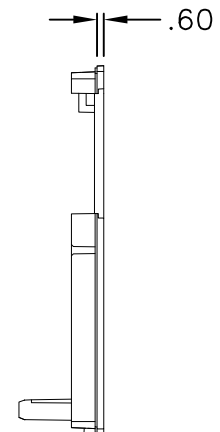
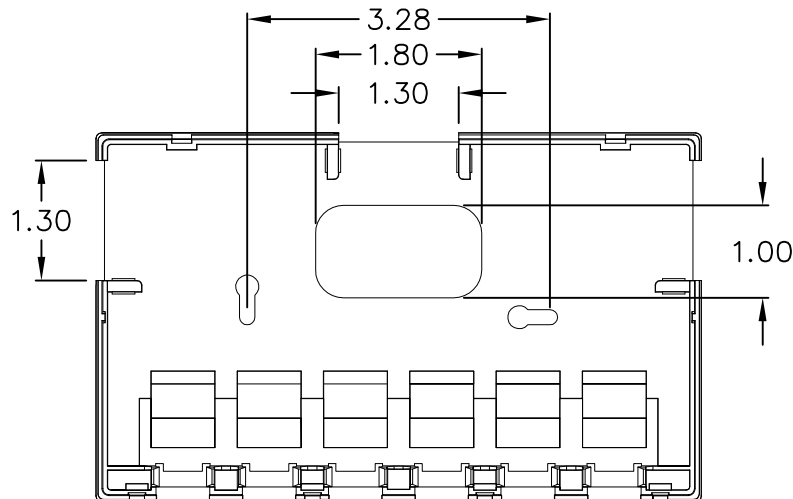
CUSTOMER CARE / TECHNICAL SUPPORT * CSR@ICC.COM / 888-ASK-4-ICC (275-4422) * 2100 E. Valencia Dr, Suite D, Fullerton, CA 92831 * www.icc.com



COVER

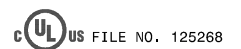


BASE



NOTE: UNLESS OTHERWISE SPECIFIED

1. MATERIAL: ABS, UL 94V-0
2. COLOR: XX: BL-BLACK, IV-IVORY & WH-WHITE



SURFACE MOUNT BOX, 6-PORT

ITEM NO. IC107SB6XX

REV. B

DWG NO. PS107SB600

PAGE NO. 2



CUSTOMER CARE / TECHNICAL SUPPORT * CSR@ICC.COM / 888-ASK-4-ICC (275-4422) * 2100 E. Valencia Dr, Suite D, Fullerton, CA 92831 * www.icc.com