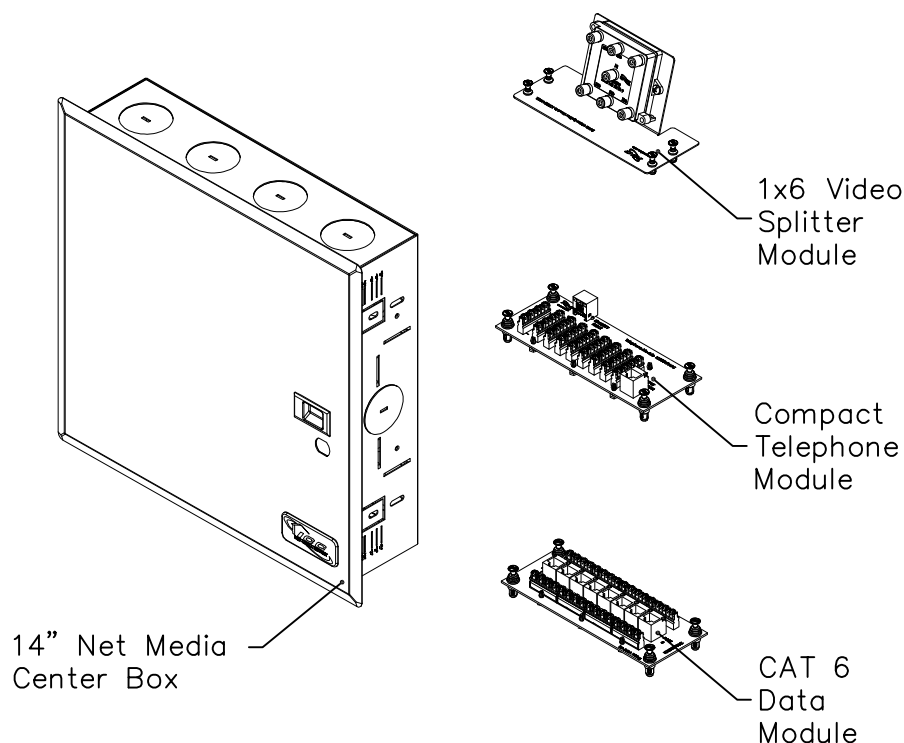


# 14" Net Media Center Combo

## PRODUCT SPECIFICATION



### Package includes:

- A. 14" Net Media Center Box Assembly, 1 pc
- B. 14" Net Media Center Door Assembly, 1 pc
- C. Door Latch, 1 pc
- D. Rubber Grommet, 4 pcs
- E. Rubber Bumper, 2 pcs
- F. #6-32 x 3/8" Zinc Plated, Pan Head Hinge Screw, 2 pcs
- G. 10 x 1" Zinc Plated, Phillips Wafer Head, Self Drill Mounting Screw, 4 pcs
- H. Protective Cover, 1 pc
- I. "NET MEDIA CENTER" Insert, 1 pc
- J. Fastener, 4 pcs
- K. Compact Module, CAT 6, Data, 8-Port, 1 pc
- L. Compact Module, Telephone, 8-Port w/RJ31, 1pc
- M. Resi module, 2 GHz Video Splitter, 1x6, 1 pc
- N. Wiring Location Sheet, 1pc
- O. Installation Instructions, 1pc

### Features and Benefits:

- Designed with steel construction, white powder coated, lightweight and sturdy.
- Designed to serve as the central distribution point for voice, data, video, audio, and security services for smaller residential structured wiring systems.
- Allows for internal modules to be mounted horizontally or vertically facilitating easier layout and wiring of the system, while providing for optimum cable management.
- Integrated snap-in module system enables users to quickly insert or move the internal modules.
- Supports up to 6 ICCMSCMPR1 or ICCMSCMPR2 Cable Management Rings for organizing and routing cable.
- Includes 4 top, 3 bottom, 6 rear, and 4 side knockouts for routing cables and 4 cable tie points.
- Includes a knockout for an optional AC power outlet (not included) to provide power distribution.
- Fits between 16" wall studs with 10 internal module mounting spaces or can be wall mounted.
- Designed with a door latch and an optional door lock knockout.
- Hinged door and NET MEDIA CENTER insert are reversible for opening from left or right.
- Accommodates all of ICRESXXXXX residential modules .
- Used with optional accessories including ICRDSDCAC2 distribution center rubber grommets, ICRDSDCAC3 distribution center plastic grommets, and ICRDSDC2LK distribution center door lock.
- Net Media Center enclosures are not designed to be installed in firewall applications.
- Complies with UL 1863, TIA-568-C, TIA-570-B and TIA-607 standards.

### COMBO, NET MEDIA CENTER, 14"

ITEM NO. ICRESDC14K

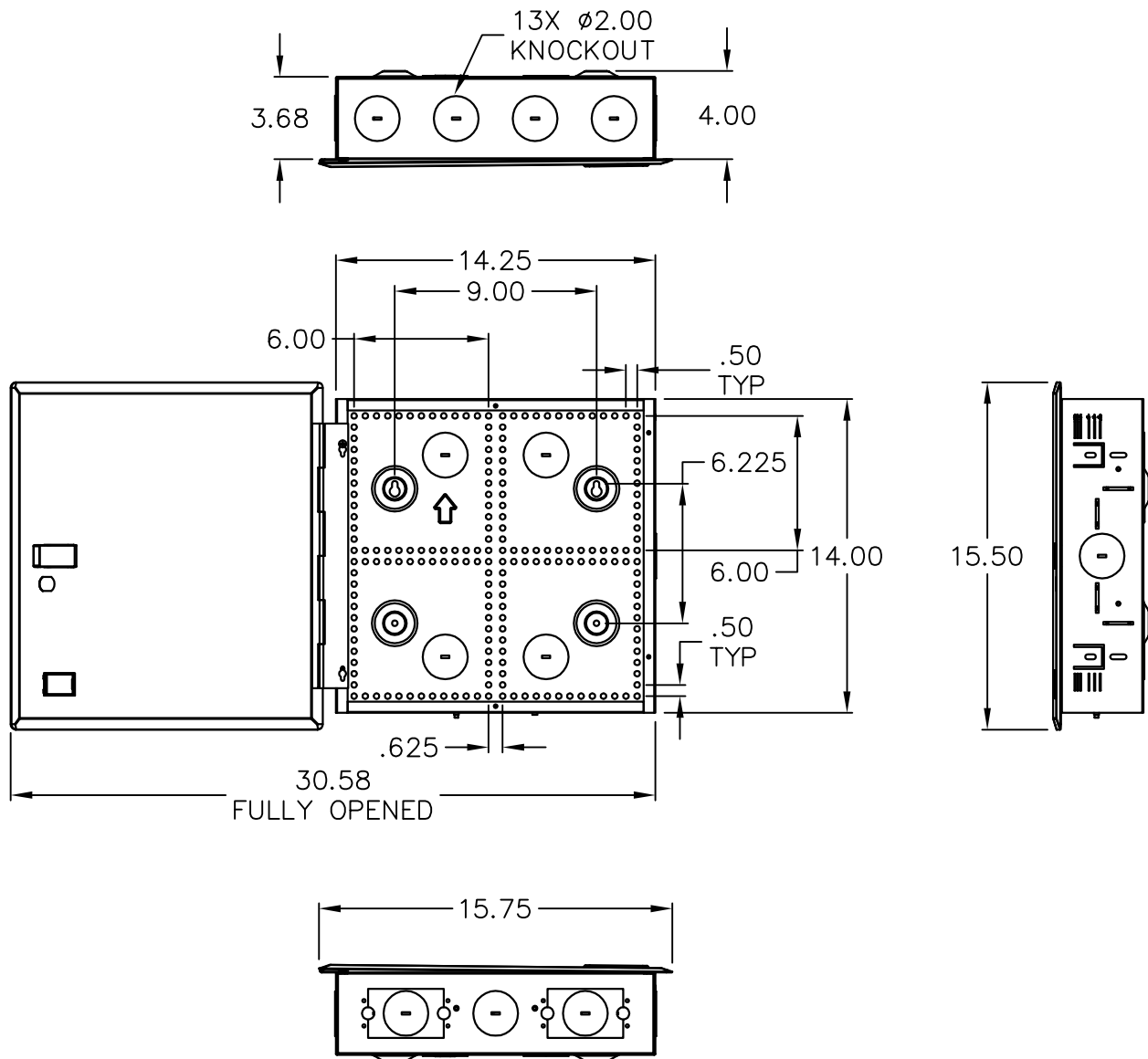
REV. B

DWG NO. PSRESDC14K

PAGE NO. 1




CUSTOMER CARE / TECHNICAL SUPPORT \* CSR@ICC.COM / 888-ASK-4-ICC (275-4422) \* 14700 Alondra Blvd., La Mirada, CA 90638 \* www.icc.com

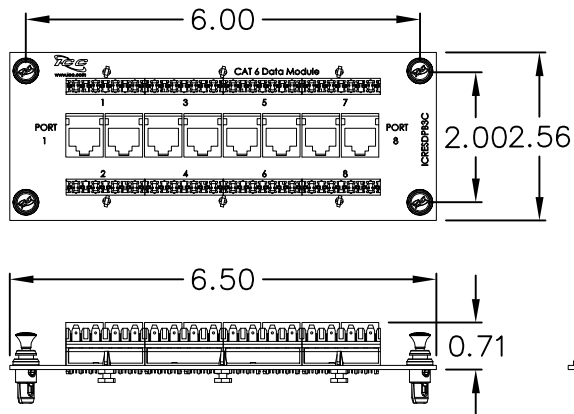


**NOTE: UNLESS OTHERWISE SPECIFIED**

1. MATERIAL: 20 GA CRS
2. SURFACE FINISH: WHITE POWDER COAT

COMBO, NET MEDIA CENTER, 14"			 PremiumProducts ProvenPerformance CompetitivePrices
ITEM NO.	ICRESDC14K	REV. B	
DWG NO.	PSRESDC14K	PAGE NO. 2	

CUSTOMER CARE / TECHNICAL SUPPORT \* CSR@ICC.COM / 888-ASK-4-ICC (275-4422) \* 14700 Alondra Blvd., La Mirada, CA 90638 \* www.icc.com



### **NOTE: UNLESS OTHERWISE SPECIFIED**

#### **1. 8-PORT CAT 6 DATA MODULE:**

- A. PCB: GLASS EPOXY FR-4 COPPER CLAD, t=1.20mm
- B. 110 BLOCK:
  - HOUSING: PC, UL 94V-0
  - IDC: PHOSPHOROUS BRONZE, TIN PLATED
- C. RJ45 JACK/SOCKET:
  - HOUSING: PBT + 15% FIBER GLASS
  - CONTACT: PHOSPHOROUS BRONZE, 50u" GOLD PLATED
- D. WIRING IN ACCORDANCE TO T568A
- E. CATEGORY 6 RATED

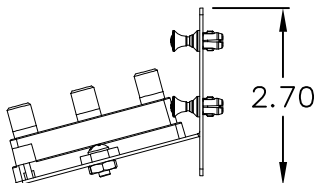
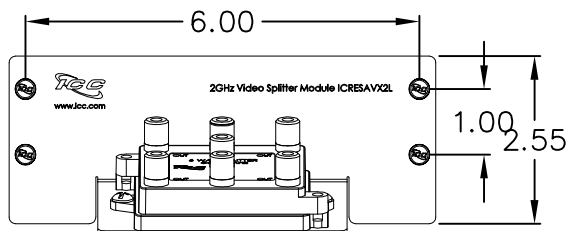
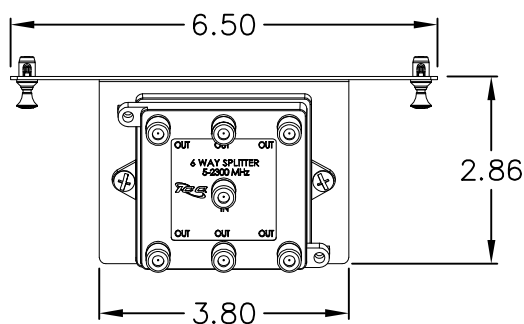
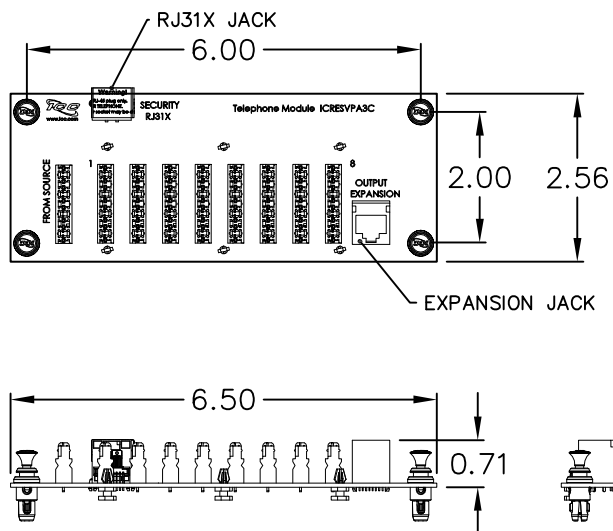
#### **2. LOCKING BUTTON: MATERIAL: NYLON 6/6, UL 94V-0**

### **NOTE: UNLESS OTHERWISE SPECIFIED**

#### **1. 8-PORT TELEPHONE MODULE WITH RJ31X JACK:**

- A. PCB: GLASS EPOXY FR-4 COPPER CLAD, t=1.20mm
- B. 110 BLOCK:
  - HOUSING: PC, UL 94V-0
  - IDC: PHOSPHOROUS BRONZE, TIN PLATED
- C. RJ45 & RJ31X JACK/SOCKET:
  - HOUSING: PBT + 15% FIBER GLASS
  - CONTACT: PHOSPHOROUS BRONZE, 50u" GOLD PLATED
- D. WIRING IN ACCORDANCE TO T568A

#### **2. LOCKING BUTTON: MATERIAL: NYLON 6/6, UL 94V-0**



### **NOTE: UNLESS OTHERWISE SPECIFIED**

#### **1. 1X6 VIDEO SPLITTER:**

- A. HOUSING: DIE-CASTING WITH NICKEL PLATING
- B. CONNECTORS: F-TYPE FEMALE
- C. FREQUENCY RANGE: 5 ~ 2300 MHZ
- D. INSERTION LOSS: 15 dB TYPICAL

#### **2. MOUNTING BRACKET:**

- A. MATERIAL: 18 GA CRS
- B. SURFACE FINISH: WHITE POWDER COAT

#### **3. LOCKING BUTTON: MATERIAL: NYLON 6/6, UL 94V-0**

## **COMBO, NET MEDIA CENTER, 14"**

ITEM NO. ICRESDC14K

REV. B

DWG NO. PSRESDC14K

PAGE NO. 3



CUSTOMER CARE / TECHNICAL SUPPORT \* CSR@ICC.COM / 888-ASK-4-ICC (275-4422) \* 14700 Alondra Blvd., La Mirada, CA 90638 \* www.icc.com