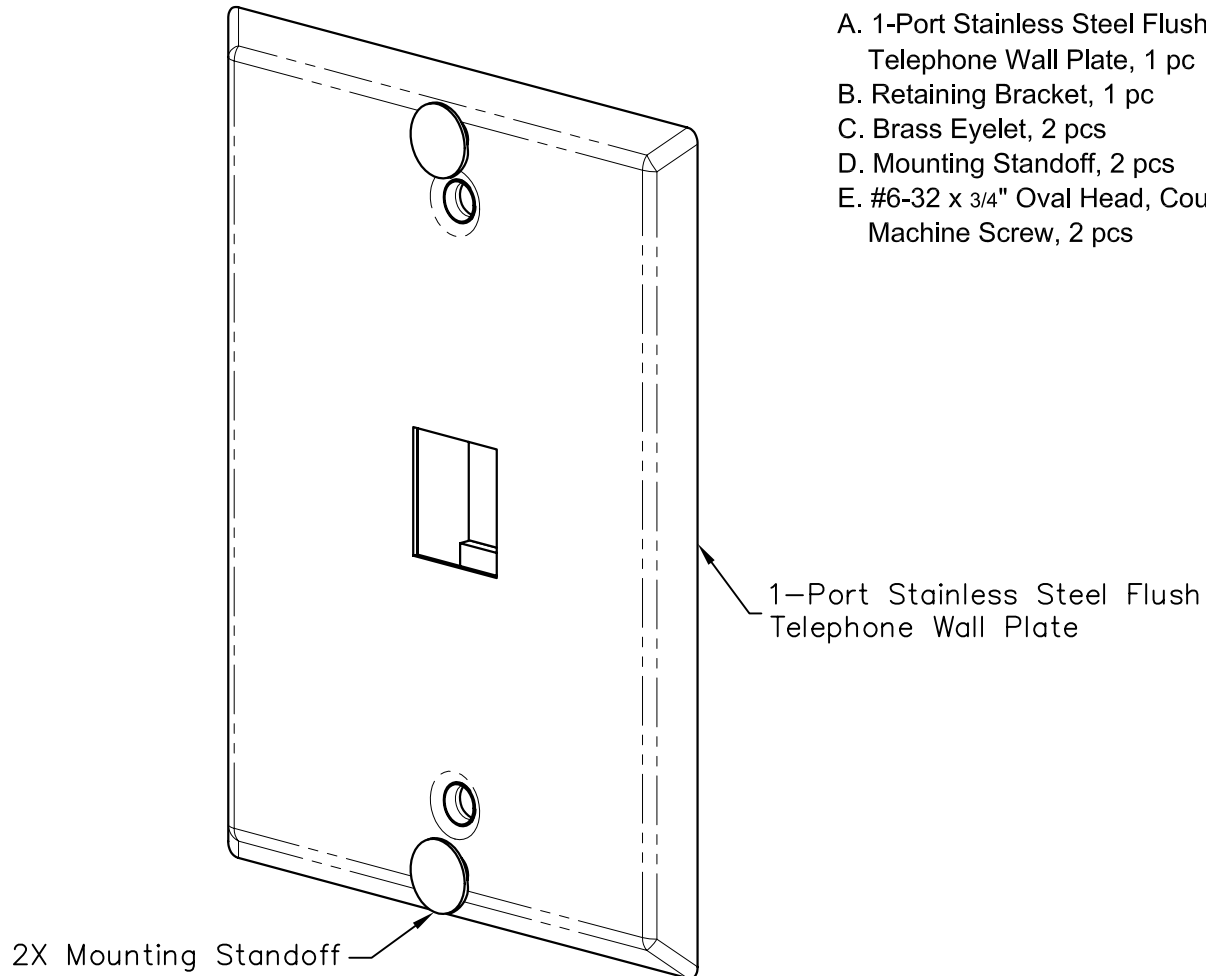


1-Port Stainless Steel Flush Telephone Wall Plate

PRODUCT SPECIFICATION


Package includes:

- A. 1-Port Stainless Steel Flush Telephone Wall Plate, 1 pc
- B. Retaining Bracket, 1 pc
- C. Brass Eyelet, 2 pcs
- D. Mounting Standoff, 2 pcs
- E. #6-32 x 3/4" Oval Head, Countersink Machine Screw, 2 pcs

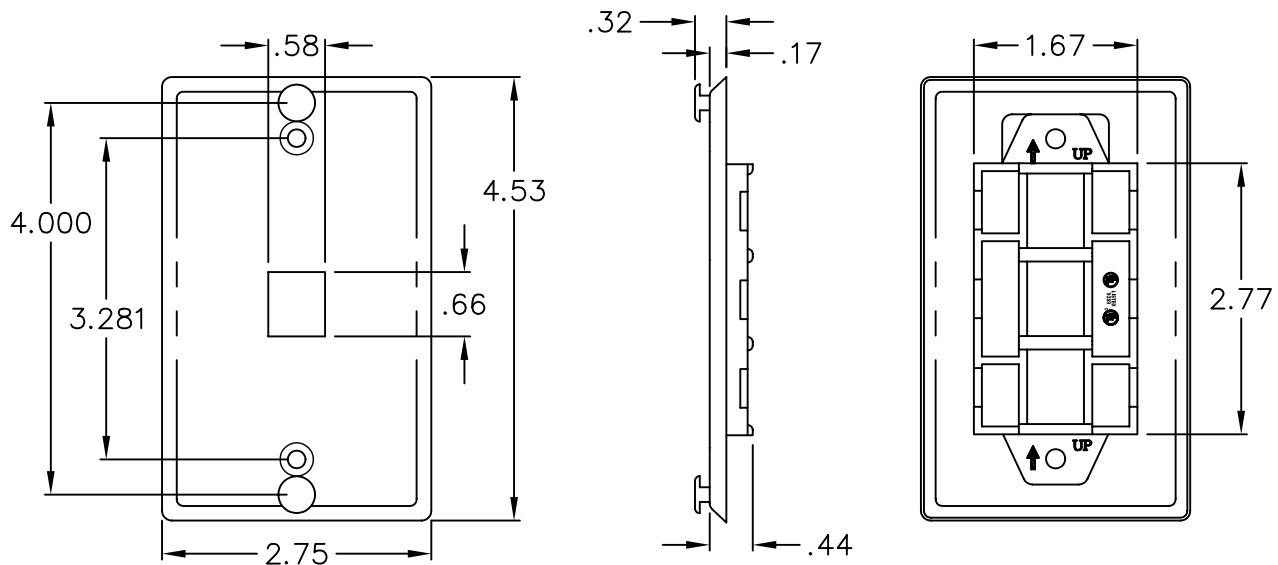


Features and Benefits:

- Configured to fit standard single gang outlet box
- Designed for commercial or residential applications
- Provided with two mounting standoffs for wall mount telephone
- Offers a flush face surface
- Accommodates a wide variety of easy to snap-in modules, providing configuration flexibility
- Accepts all IC107 modules
- UL listed

WALL PLATE, PHONE, FLUSH, 1-PORT, SS			 <i>PremiumProducts</i> <i>ProvenPerformance</i> <i>CompetitivePrices</i>
ITEM NO.	IC107FFWSS	REV.	B
DWG NO.	PS107FFWSS	PAGE NO.	1

CUSTOMER CARE / TECHNICAL SUPPORT * CSR@ICC.COM / 888-ASK-4-ICC (275-4422) * 14700 Alondra Blvd., La Mirada, CA 90638 * www.icc.com



NOTE: UNLESS OTHERWISE SPECIFIED

1. MATERIAL:

- A. FACEPLATE: 22 GA STAINLESS STEEL
- B. RETAINING BRACKET: ABS, UL 94V-0

UL US FILE NO. 125268

WALL PLATE, PHONE, FLUSH, 1-PORT, SS



ITEM NO. IC107FFWSS

REV. B

DWG NO. PS107FFWSS

PAGE NO. 2

CUSTOMER CARE / TECHNICAL SUPPORT * CSR@ICC.COM / 888-ASK-4-ICC (275-4422) * 14700 Alondra Blvd., La Mirada, CA 90638 * www.icc.com